

# 2008 Houchens Industries/KHSAA Girls' Sweet 16 - Game Box Score

## DuPont Manual Lady Crimson vs. Breathitt County Lady Cats

**Date: 03/14/2008 Time: 12 Noon CST Site: Diddle Arena-Bowling Green, KY Attendance: N**

### Visitors: Breathitt County Lady Cats

##	Name	P	FG	3 Pt	FT	PTS	ORB	DRB	TR	PF	AST	TO	BS	ST	MIN
4	* Amanda Southwood		0/2	1/2	0/1	3	0	0	0	3	0	6	0	2	24:41
5	Ashley White		0/1	0/0	0/0	0	0	0	0	0	0	0	0	0	1:15
11	* Brittany Haddix		2/4	0/0	0/0	4	0	1	1	3	0	1	0	0	22:16
12	* Kendall Noble		2/8	0/1	6/8	10	1	2	3	4	3	3	1	2	30:19
20	Paige Hamblin		0/0	0/1	0/0	0	0	0	0	0	0	0	0	0	1:33
21	Brianna Deaton		0/0	0/0	0/0	0	0	0	0	0	0	0	0	0	8:24
22	Shania Hollan		0/0	0/0	0/0	0	1	0	1	0	0	0	0	0	1:15
23	Kristin Bowen		0/0	0/1	2/2	2	0	1	1	0	0	1	0	0	3:05
30	* Brittany Hardin		0/1	1/1	0/0	3	1	3	4	3	1	8	0	0	28:49
33	Eden Keeton		0/1	0/0	0/0	0	0	1	1	1	0	1	0	0	2:23
40	Victoria Shouse		0/1	0/0	0/0	0	0	1	1	2	0	0	0	0	3:05
42	Emily White		0/0	0/2	0/0	0	0	1	1	0	0	0	0	0	1:49
53	* Lenae Shouse		4/6	0/0	1/2	9	2	3	5	3	1	2	0	4	29:51
32	Courtney Fugate		0/0	0/0	0/0	0	0	0	0	0	0	0	0	0	1:15
	Team						1	4	5						
	<b>Totals</b>		<b>8/24</b>	<b>2/8</b>	<b>9/13</b>	<b>31</b>	<b>6</b>	<b>17</b>	<b>23</b>	<b>19</b>	<b>5</b>	<b>22</b>	<b>1</b>	<b>8</b>	<b>160</b>
	<b>2 PT FG</b>		1st Half		5/11	45.5%	2nd Half		3/13	23.1%	Game	8/24	33.3%		
	<b>3 PT FG</b>		1st Half		0/3	0.00%	2nd Half		2/5	40.0%	Game	2/8	25.0%		
	<b>Free Throws</b>		1st Half		6/8	75.0%	2nd Half		3/5	60.0%	Game	9/13	69.2%		

### Home: DuPont Manual Lady Crimson

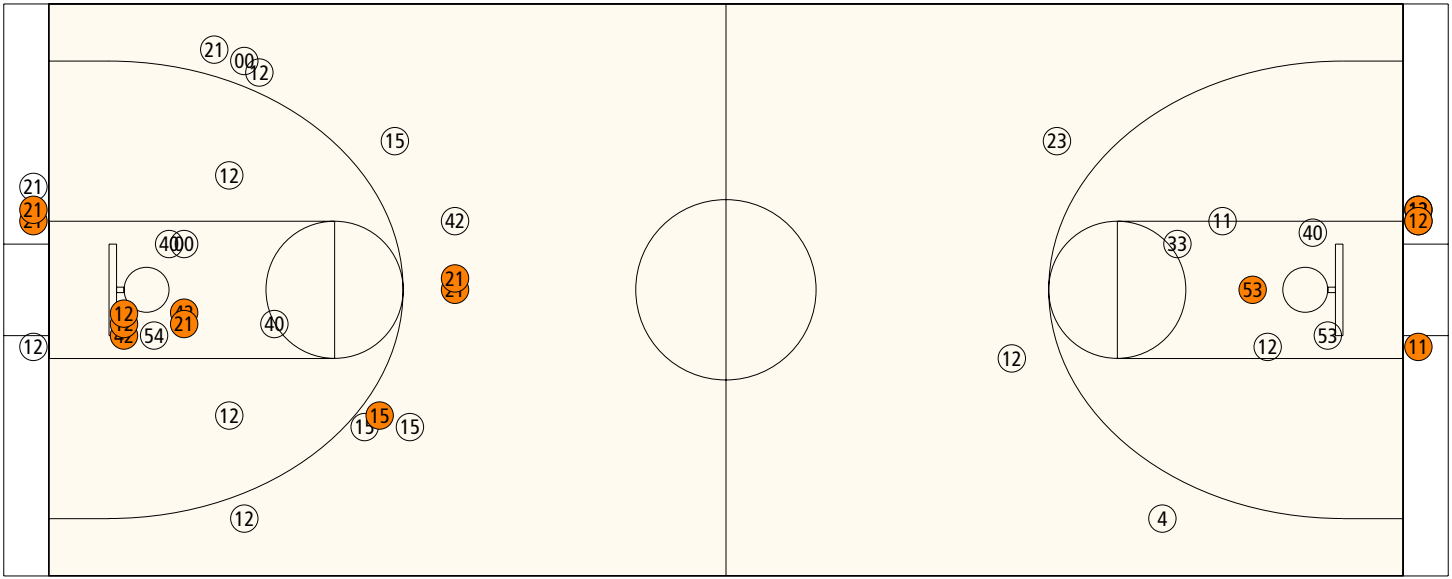
##	Name	P	FG	3 Pt	FT	PTS	ORB	DRB	TR	PF	AST	TO	BS	ST	MIN
00	Janie Klein		0/1	0/2	0/0	0	2	1	3	2	1	0	0	0	15:54
3	Denisha Harbison		0/0	0/0	0/0	0	1	0	1	1	0	1	0	0	2:38
10	Celeste Garruto		0/0	0/0	0/0	0	0	2	2	0	0	0	0	0	1:09
12	* TeAira Epps		3/9	0/2	3/4	9	2	0	2	0	1	2	0	1	22:14
15	* Jordan Trimble		0/1	2/5	0/0	6	1	0	1	2	1	2	1	3	24:34
21	* Danielle Woodmore		4/5	2/3	3/4	17	1	0	1	3	3	5	0	1	26:09
22	Zhakiyah Shahid-Martin		0/0	0/0	2/3	2	0	2	2	3	0	1	0	0	11:03
25	Nicole Lauterbach		0/0	0/0	0/0	0	0	0	0	0	0	0	0	1	1:33
33	Mechael Guess		0/1	0/0	0/0	0	0	0	0	0	0	0	1	0	1:15
34	Raven Hester		0/0	0/0	0/0	0	0	0	0	0	0	0	0	0	1:49
40	Brittany Turner		0/2	0/0	0/1	0	0	3	3	0	0	0	0	0	7:10
42	* Brittany Wilson		6/8	0/1	4/5	16	5	4	9	2	1	3	1	3	19:15
54	* Avery Jones		0/1	0/0	2/2	2	1	4	5	3	1	4	0	4	23:44
24	Kayla King		0/1	0/0	0/0	0	0	0	0	0	0	1	0	0	1:33
	Team						0	0	0						
	<b>Totals</b>		<b>13/29</b>	<b>4/13</b>	<b>14/19</b>	<b>52</b>	<b>13</b>	<b>16</b>	<b>29</b>	<b>16</b>	<b>8</b>	<b>19</b>	<b>3</b>	<b>13</b>	<b>160</b>
	<b>2 PT FG</b>		1st Half		7/15	46.7%	2nd Half		6/14	42.9%	Game	13/29	44.8%		
	<b>3 PT FG</b>		1st Half		3/11	27.3%	2nd Half		1/2	50.0%	Game	4/13	30.8%		
	<b>Free Throws</b>		1st Half		7/11	63.6%	2nd Half		7/8	87.5%	Game	14/19	73.7%		

	BREAT	DPM		BREAT	DPM		BREAT	DPM
Free Throw Pts	9	14	3Pt Points	6	12	Pts/Possession	0.56	0.91
Pts off Turnovers	12	20	2nd Chance Points	2	8	Pts off Bench	2	2
Total Rebounds	23	29	Team Rebounds	5	0	Dead Ball Reb	4	4
Off Rebound %	27.3	43.3	Def Rebound %	56.7	72.7	Total Rebound %	44.2	55.8
3Pt Efficiency	+2.8	+0.9	Def. Stops	36	38	Pts/Shot	0.82	1.02
Technical Fouls	<b>BREAT</b>		None					
	<b>DPM</b>		None					
Officials	Karen Phillips, Lance Wilson, Will Jones							

	Qtr 1	Qtr 2	Qtr 3	Qtr 4	OT 1	OT 2	OT 3	OT 4	Total
<b>Breathitt County Lady Cats</b>	8	8	7	8	0	0	0	0	<b>31</b>
<b>DuPont Manual Lady Crimson</b>	14	16	13	9	0	0	0	0	<b>52</b>

**Largest Lead** DPM 50 BREAT 28 (22 pts) **Lead Changes** 4 **Number of Ties** 2  
**Comments:** None

### FIRST HALF



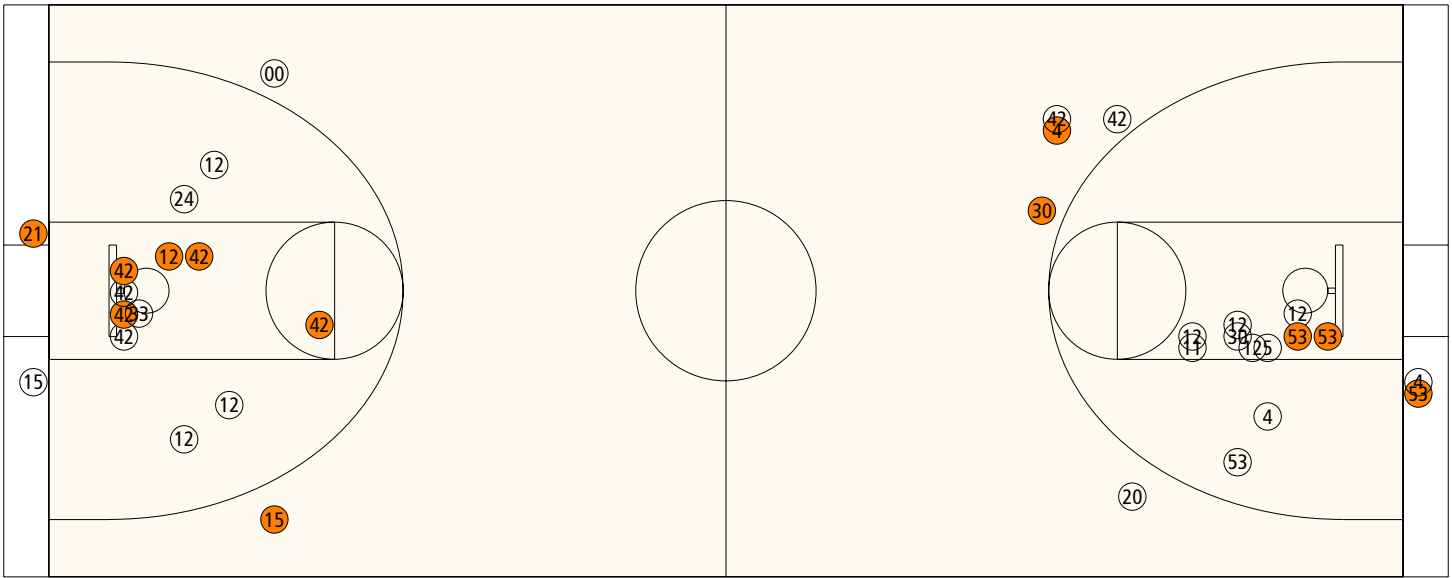
#### DuPont Manual

Shooting	Pts	Pts
2FG 7/15 (46.7%)	14	Pts/Shot 0.97
3FG 3/11 (27.3%)	9	2nd Eff Pts 4
TFG 10/26 (38.5%)		Pts off TO's 14
FT 7/11 (63.6%)	7	3Pt Eff -3.8
Scoring Distribution: 2FG 46.7% 3FG 30.0% FT 23.3%		

#### Breathitt County

Shooting	Pts	Pts
2FG 5/11 (45.5%)	10	Pts/Shot 0.89
3FG 0/3 (0.00%)	0	2nd Eff Pts 0
TFG 5/14 (35.7%)		Pts off TO's 7
FT 6/8 (75.0%)	6	3Pt Eff -30.3
Scoring Distribution: 2FG 62.5% 3FG 0.0% FT 37.5%		

### SECOND HALF



#### DuPont Manual

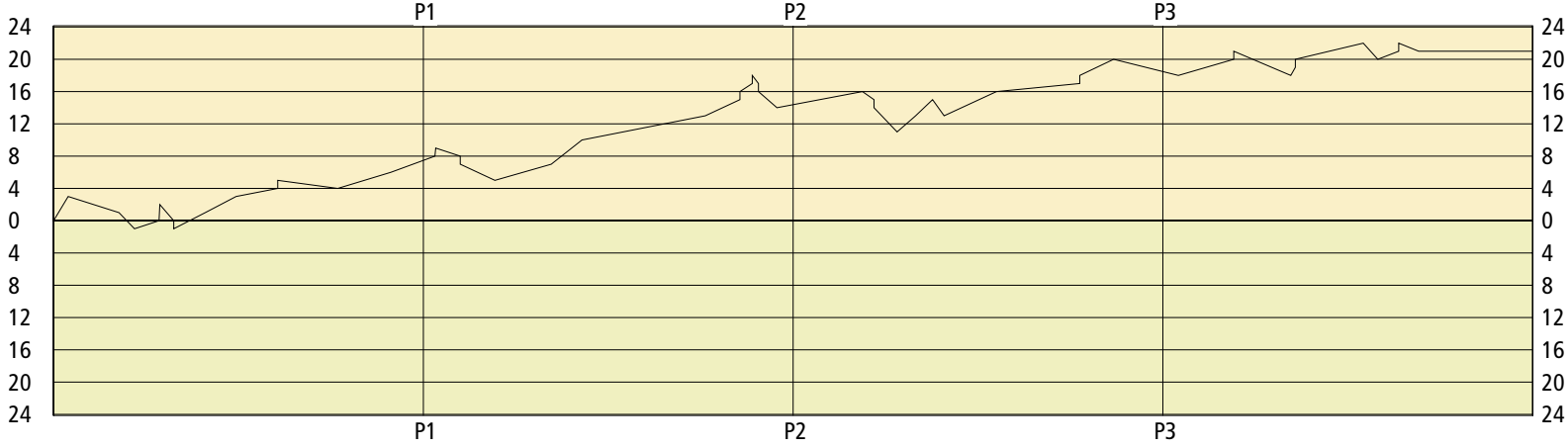
2FG 6/14 (42.9%)	12	Pts/Shot 1.10
3FG 1/2 (50.0%)	3	2nd Eff Pts 4
TFG 7/16 (43.8%)		Pts off TO's 6
FT 7/8 (87.5%)	7	3Pt Eff +21.4
Scoring Distribution: 2FG 54.5% 3FG 13.6% FT 31.8%		

#### Breathitt County

2FG 3/13 (23.1%)	6	Pts/Shot 0.75
3FG 2/5 (40.0%)	6	2nd Eff Pts 2
TFG 5/18 (27.8%)		Pts off TO's 5
FT 3/5 (60.0%)	3	3Pt Eff +24.6
Scoring Distribution: 2FG 40.0% 3FG 40.0% FT 20.0%		

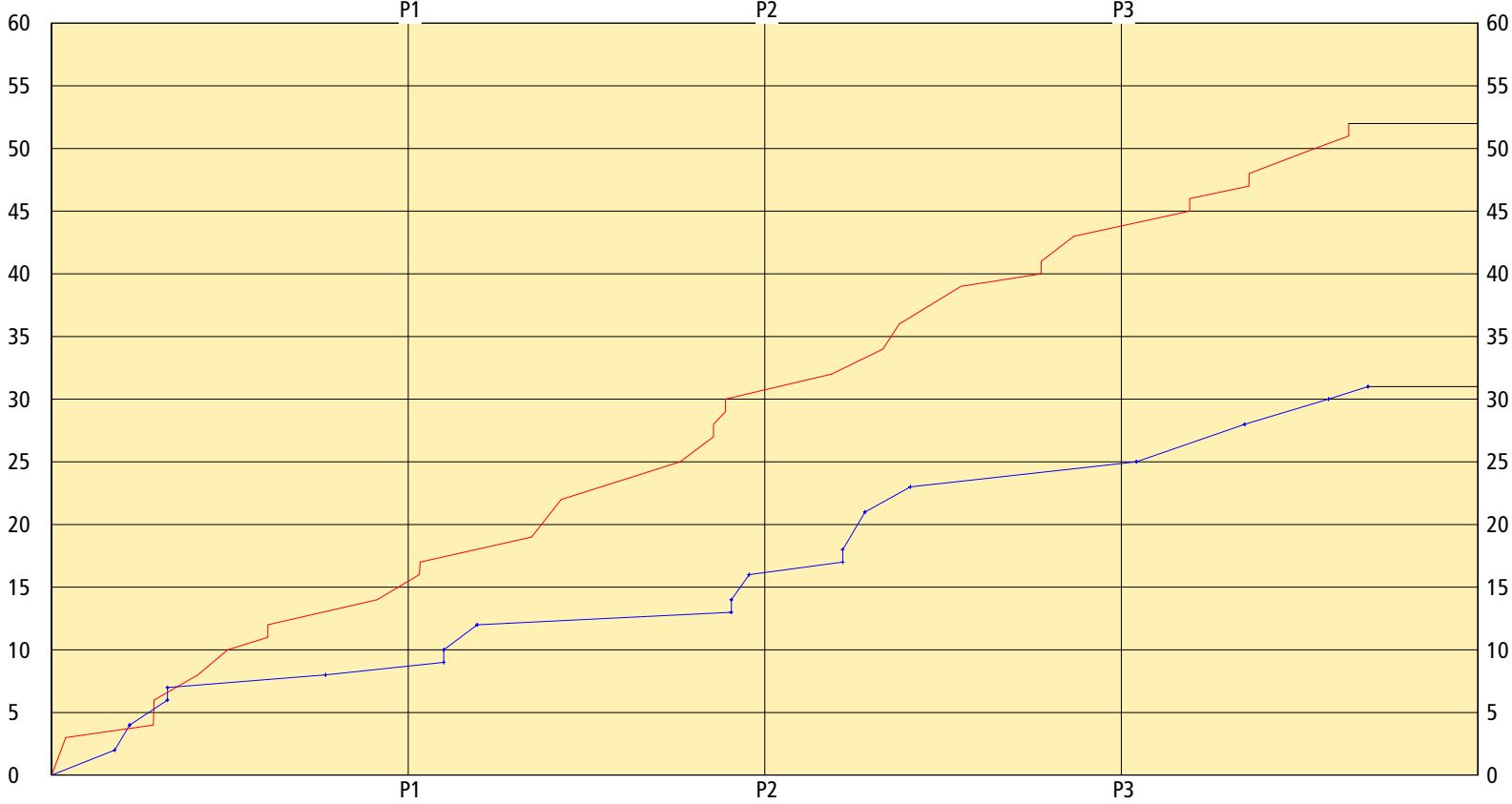
Lady Crimsons

LEAD TIMELINE



Lady Cats

Lady Crimsons — Lady Cats SCORING TIMELINE



Largest Lead DPM 50 BREAT 28 (22 pts) Lead Changes 4 Number of Ties 2

**2008 Houchens Industries/KHSAA Girls' Sweet 16 - Play by Play Report - Scoring Only (pg 1)**  
**DuPont Manual Lady Crimson vs. Breathitt County Lady Cats**  
**Date: 03/14/2008 Time: 12 Noon CST Site: Diddle Arena-Bowling Green, KY Attendance: N**

Name	Action	Action	Score	Clock	Diff	Name	Action	Action
D Woodmore	3Pt Made	J Trimble Assist	3-0	1 7:41	+3 (L1)			
			3-2	1 6:35	+1	L Shouse	FG Made	K Noble Assist
			3-4	1 6:15	-1 (L2)	B Haddix	Layup Made	K Noble Assist
D Woodmore	FT Made		4-4	1 5:43	(T1)	B Haddix	Personal Foul	
B Wilson	Putback Made		6-4	1 5:42	+2 (L3)			
			6-6	1 5:24	(T2)	K Noble	Layup Made	
A Jones	Personal Foul		6-7	1 5:24	-1 (L4)	K Noble	FT Made	
T Epps	FG Made	B Wilson Assist	8-7	1 4:43	+1 (L5)			
B Wilson	FG Made	D Woodmore Assist	10-7	1 4:03	+3			
A Jones	FT Made		11-7	1 3:09	+4			
A Jones	FT Made		12-7	1 3:09	+5			
			12-8	1 1:51	+4	K Noble	FT Made	
D Woodmore	Layup Made		14-8	1 0:42	+6			

**End of Period Summary Lady Crimson 14 Lady Cats 8**

**Largest Lead: Lady Crimson 14 Lady Cats 8 (6 pts)**

**Lead in Period: Lady Crimson 14 Lady Cats 8 (6 pts)**

**5 for 3 oppo pts**

**5 for 2 pts**

**5/13 for 38.5 %**

**3/5 for 60.0 %**

**Turnovers**

**2nd Chances**

**Field Goals**

**Free Throws**

**Lead Changes: 5 Ties: 2**

**Lead Changes: 4 Ties: 2 (this period)**

**8 for 9 oppo pts**

**0 for 0 pts**

**3/5 for 60.0 %**

**2/3 for 66.7 %**

D Woodmore	FG Made		16-8	2 7:45	+8			
D Woodmore	FT Made		17-8	2 7:44	+9	B Haddix	Personal Foul	
			17-9	2 7:12	+8	K Noble	FT Made	
			17-10	2 7:12	+7	K Noble	FT Made	
			17-12	2 6:27	+5	B Haddix	Layup Made	
T Epps	Putback Made		19-12	2 5:14	+7			
D Woodmore	3Pt Made	A Jones Assist	22-12	2 4:34	+10			
J Trimble	3Pt Made	J Klein Assist	25-12	2 1:54	+13			
D Woodmore	Layup Made		27-12	2 1:09	+15			
D Woodmore	FT Made		28-12	2 1:09	+16	A Southwood	Personal Foul	
Z Shahid-Martin	FT Made		29-12	2 0:53	+17			
Z Shahid-Martin	FT Made		30-12	2 0:53	+18			
Z Shahid-Martin	Personal Foul		30-13	2 0:45	+17	K Bowen	FT Made	
			30-14	2 0:45	+16	K Bowen	FT Made	
			30-16	2 0:21	+14	K Noble	Layup Made	

**End of Period Summary Lady Crimson 30 Lady Cats 16**

**Largest Lead: Lady Crimson 30 Lady Cats 12 (18 pts)**

**Lead in Period: Lady Crimson 30 Lady Cats 12 (18 pts)**

**5 for 4 oppo pts**

**4 for 2 pts**

**5/13 for 38.5 %**

**4/6 for 66.7 %**

**Turnovers**

**2nd Chances**

**Field Goals**

**Free Throws**

**Lead Changes: 5 Ties: 2**

**Lead Changes: 0 Ties: 0 (this period)**

**6 for 5 oppo pts**

**1 for 0 pts**

**2/9 for 22.2 %**

**4/5 for 80.0 %**

B Wilson	FG Made	T Epps Assist	32-16	3 6:30	+16			
A Jones	Personal Foul		32-17	3 6:15	+15	K Noble	FT Made	
			32-18	3 6:15	+14	K Noble	FT Made	
			32-21	3 5:45	+11	A Southwood	3Pt Made	L Shouse Assist
B Wilson	FG Made	D Woodmore Assist	34-21	3 5:21	+13			

**2008 Houchens Industries/KHSAA Girls' Sweet 16 - Play by Play Report - Scoring Only (pg 2)**  
**DuPont Manual Lady Crimson vs. Breathitt County Lady Cats**  
**Date: 03/14/2008 Time: 12 Noon CST Site: Diddle Arena-Bowling Green, KY Attendance: N**

Name	Action	Action	Score	Clock	Diff	Name	Action	Action
B Wilson	Putback Made		36-21	3 4:59	+15			
			36-23	3 4:44	+13	L Shouse	Layup Made	B Hardin Assist
J Trimble	3Pt Made	D Woodmore Assist	39-23	3 3:36	+16			
B Wilson	FT Made		40-23	3 1:48	+17	K Noble	Personal Foul	
B Wilson	FT Made		41-23	3 1:48	+18			
B Wilson	Putback Made		43-23	3 1:04	+20			

**End of Period Summary Lady Crimson 43 Lady Cats 23**

**Largest Lead: Lady Crimson 43 Lady Cats 23 (20 pts)**

**Lead in Period: Lady Crimson 43 Lady Cats 23 (20 pts)**

**3 for 0 oppo pts**

**4 for 4 pts**

**5/12 for 41.7 %**

**2/2 for 100 %**

**Turnovers**

**2nd Chances**

**Field Goals**

**Free Throws**

**Lead Changes: 5 Ties: 2**

**Lead Changes: 0 Ties: 0 (this period)**

**4 for 4 oppo pts**

**2 for 0 pts**

**2/9 for 22.2 %**

**2/2 for 100 %**

**End of Period Summary Lady Crimson 43 Lady Cats 23**

**Largest Lead: Lady Crimson 43 Lady Cats 23 (20 pts)**

**Lead in Period: Lady Crimson 43 Lady Cats 23 (20 pts)**

**0 for 0 oppo pts**

**0 for 0 pts**

**0/0 for 0.00 %**

**0/0 for 0.00 %**

**Turnovers**

**2nd Chances**

**Field Goals**

**Free Throws**

**Lead Changes: 5 Ties: 2**

**Lead Changes: -1 Ties: 0 (this period)**

**0 for 0 oppo pts**

**0 for 0 pts**

**0/0 for 0.00 %**

**0/0 for 0.00 %**

			43-25	4 7:40	+18	L Shouse	FG Made	K Noble Assist
T Epps	FG Made		45-25	4 6:28	+20			
T Epps	FT Made		46-25	4 6:28	+21	L Shouse	Personal Foul	
			46-28	4 5:14	+18	B Hardin	3Pt Made	
B Wilson	FT Made		47-28	4 5:08	+19	K Noble	Personal Foul	
B Wilson	FT Made		48-28	4 5:08	+20			
D Woodmore	Layup Made		50-28	4 3:40	+22			
			50-30	4 3:21	+20	L Shouse	Putback Made	
T Epps	FT Made		51-30	4 2:54	+21			
T Epps	FT Made		52-30	4 2:54	+22			
			52-31	4 2:28	+21	L Shouse	FT Made	

**End of Period Summary Lady Crimson 52 Lady Cats 31**

**Largest Lead: Lady Crimson 50 Lady Cats 28 (22 pts)**

**Lead in Period: Lady Crimson 50 Lady Cats 28 (22 pts)**

**6 for 5 oppo pts**

**0 for 0 pts**

**2/4 for 50.0 %**

**5/6 for 83.3 %**

**Turnovers**

**2nd Chances**

**Field Goals**

**Free Throws**

**Lead Changes: 5 Ties: 2**

**Lead Changes: 0 Ties: 0 (this period)**

**4 for 2 oppo pts**

**3 for 2 pts**

**3/9 for 33.3 %**

**1/3 for 33.3 %**

**OFFICIAL BASKETBALL BOX SCORE**

03/14/2008 12 Noon CST

Diddle Arena

Breathitt County Lady Cats vs DuPont Manual Lady Crimsons

Final Box Score

Bowling Green, KY

No.	Breathitt County Lady Cats	Total FG		3-point		Free throw		Rebounds			F	TP	A	TO	BLK	STL	MIN
		FG	FGA	FG	FGA	FT	FTA	Off	Def	Tot							
4	<b>Amanda Southwood</b>	1	4	1	2	0	1	0	0	0	3	3	0	6	0	2	24:41
5	Ashley White	0	1	0	0	0	0	0	0	0	0	0	0	0	0	0	1:15
11	<b>Brittany Haddix</b>	2	4	0	0	0	0	0	1	1	3	4	0	1	0	0	22:16
12	<b>Kendall Noble</b>	2	9	0	1	6	8	1	2	3	4	10	3	3	1	2	30:19
20	Paige Hamblin	0	1	0	1	0	0	0	0	0	0	0	0	0	0	0	1:33
53	<b>Lenae Shouse</b>	4	6	0	0	1	2	2	3	5	3	9	1	2	0	4	29:51
30	<b>Brittany Hardin</b>	1	2	1	1	0	0	1	3	4	3	3	1	8	0	0	28:49
21	Brianna Deaton	0	0	0	0	0	0	0	0	0	0	0	0	0	0	0	8:24
23	Kristin Bowen	0	1	0	1	2	2	0	1	1	0	2	0	1	0	0	3:05
40	Victoria Shouse	0	1	0	0	0	0	0	1	1	2	0	0	0	0	0	3:05
33	Eden Keeton	0	1	0	0	0	0	0	1	1	1	0	0	1	0	0	2:23
42	Emily White	0	2	0	2	0	0	0	1	1	0	0	0	0	0	0	1:49
22	Shania Hollan	0	0	0	0	0	0	1	0	1	0	0	0	0	0	0	1:15
32	Courtney Fugate	0	0	0	0	0	0	0	0	0	0	0	0	0	0	0	1:15
<b>Team (Included in Totals)</b>								<b>1</b>	<b>4</b>	<b>5</b>							
<b>Totals</b>		<b>10</b>	<b>32</b>	<b>2</b>	<b>8</b>	<b>9</b>	<b>13</b>	<b>6</b>	<b>17</b>	<b>23</b>	<b>19</b>	<b>31</b>	<b>5</b>	<b>22</b>	<b>1</b>	<b>8</b>	<b>160</b>
Total FG%: 1st half 5 - 14 (35.7%)		2nd half 5 - 18 (27.8%)		Game 10 - 32 (31.3%)		Deadball											
3Pt FG%: 1st half 0 - 3 (0.00%)		2nd half 2 - 5 (40.0%)		Game 2 - 8 (25.0%)		rebounds											
FT%: 1st half 6 - 8 (75.0%)		2nd half 3 - 5 (60.0%)		Game 9 - 13 (69.2%)		4											

No.	DuPont Manual Lady Crimsons	Total FG		3-point		Free throw		Rebounds			F	TP	A	TO	BLK	STL	MIN
		FG	FGA	FG	FGA	FT	FTA	Off	Def	Tot							
00	Janie Klein	0	3	0	2	0	0	2	1	3	2	0	1	0	0	0	15:54
3	Denisha Harbison	0	0	0	0	0	0	1	0	1	1	0	0	1	0	0	2:38
10	Celeste Garruto	0	0	0	0	0	0	0	2	2	0	0	0	0	0	0	1:09
12	<b>TeAira Epps</b>	3	11	0	2	3	4	2	0	2	0	9	1	2	0	1	22:14
15	<b>Jordan Trimble</b>	2	6	2	5	0	0	1	0	1	2	6	1	2	1	3	24:34
21	<b>Danielle Woodmore</b>	6	8	2	3	3	4	1	0	1	3	17	3	5	0	1	26:09
54	<b>Avery Jones</b>	0	1	0	0	2	2	1	4	5	3	2	1	4	0	4	23:44
42	<b>Brittany Wilson</b>	6	9	0	1	4	5	5	4	9	2	16	1	3	1	3	19:15
22	Zhakiyah Shahid-Martin	0	0	0	0	2	3	0	2	2	3	2	0	1	0	0	11:03
40	Brittany Turner	0	2	0	0	0	1	0	3	3	0	0	0	0	0	0	7:10
34	Raven Hester	0	0	0	0	0	0	0	0	0	0	0	0	0	0	0	1:49
25	Nicole Lauterbach	0	0	0	0	0	0	0	0	0	0	0	0	0	0	1	1:33
24	Kayla King	0	1	0	0	0	0	0	0	0	0	0	0	1	0	0	1:33
33	Mecheal Guess	0	1	0	0	0	0	0	0	0	0	0	0	0	1	0	1:15
<b>Team (Included in Totals)</b>								<b>0</b>	<b>0</b>	<b>0</b>							
<b>Totals</b>		<b>17</b>	<b>42</b>	<b>4</b>	<b>13</b>	<b>14</b>	<b>19</b>	<b>13</b>	<b>16</b>	<b>29</b>	<b>16</b>	<b>52</b>	<b>8</b>	<b>19</b>	<b>3</b>	<b>13</b>	<b>160</b>
Total FG%: 1st half 10 - 26 (38.5%)		2nd half 7 - 16 (43.8%)		Game 17 - 42 (40.5%)		Deadball											
3Pt FG%: 1st half 3 - 11 (27.3%)		2nd half 1 - 2 (50.0%)		Game 4 - 13 (30.8%)		rebounds											
FT%: 1st half 7 - 11 (63.6%)		2nd half 7 - 8 (87.5%)		Game 14 - 19 (73.7%)		4											

Technical Fouls: None

Attendance: N

Officials: Karen Phillips, Lance Wilson, Will Jones

Score by Period	1st	2nd	3rd	4th	Final	Record	Overall	Conf
Breathitt County Lady Cats	8	8	7	8	<b>31</b>	Lady Cats		
DuPont Manual Lady Crimsons	14	16	13	9	<b>52</b>	Lady Crimsons		

<b>Lady Crimsons Lady Cats</b>	<b>Lady Crimsons Lady Cats</b>	<b>Lady Crimsons Lady Cats</b>
Points off Turnovers 20 12	Second Effort Points 8 2	Bench Points 2 2
Points in the Paint 22 14	3 Point Points 12 6	Free Throw Points 14 9
3pt Efficiency +0.9 +2.8	Points/Shot 1.02 0.82	Defensive Stops 38 36
Largest Lead 50 28 (22 pts)	Lead Changes 4	Number of Ties 2

Game comments: None